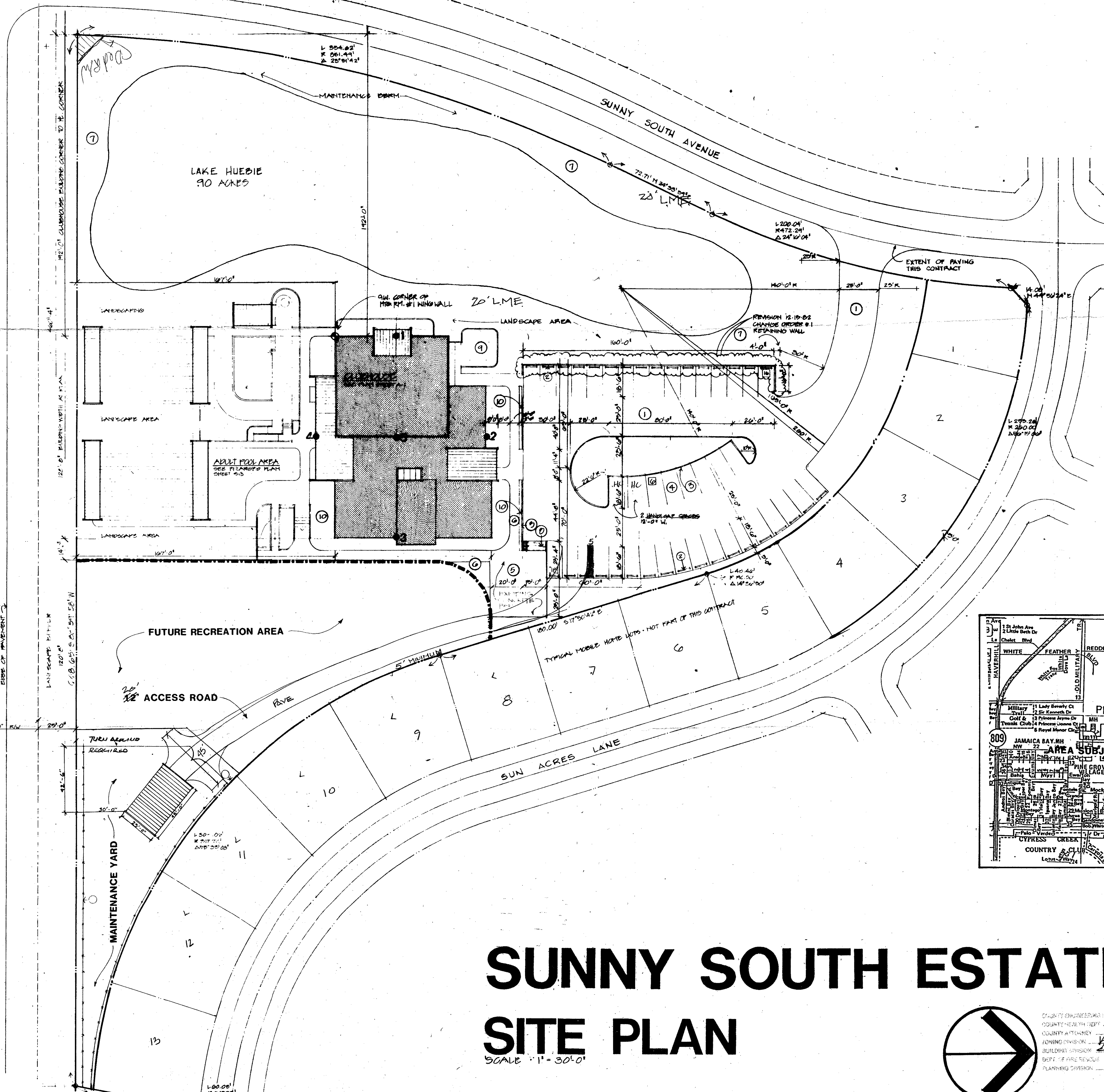


Sunny South Estates

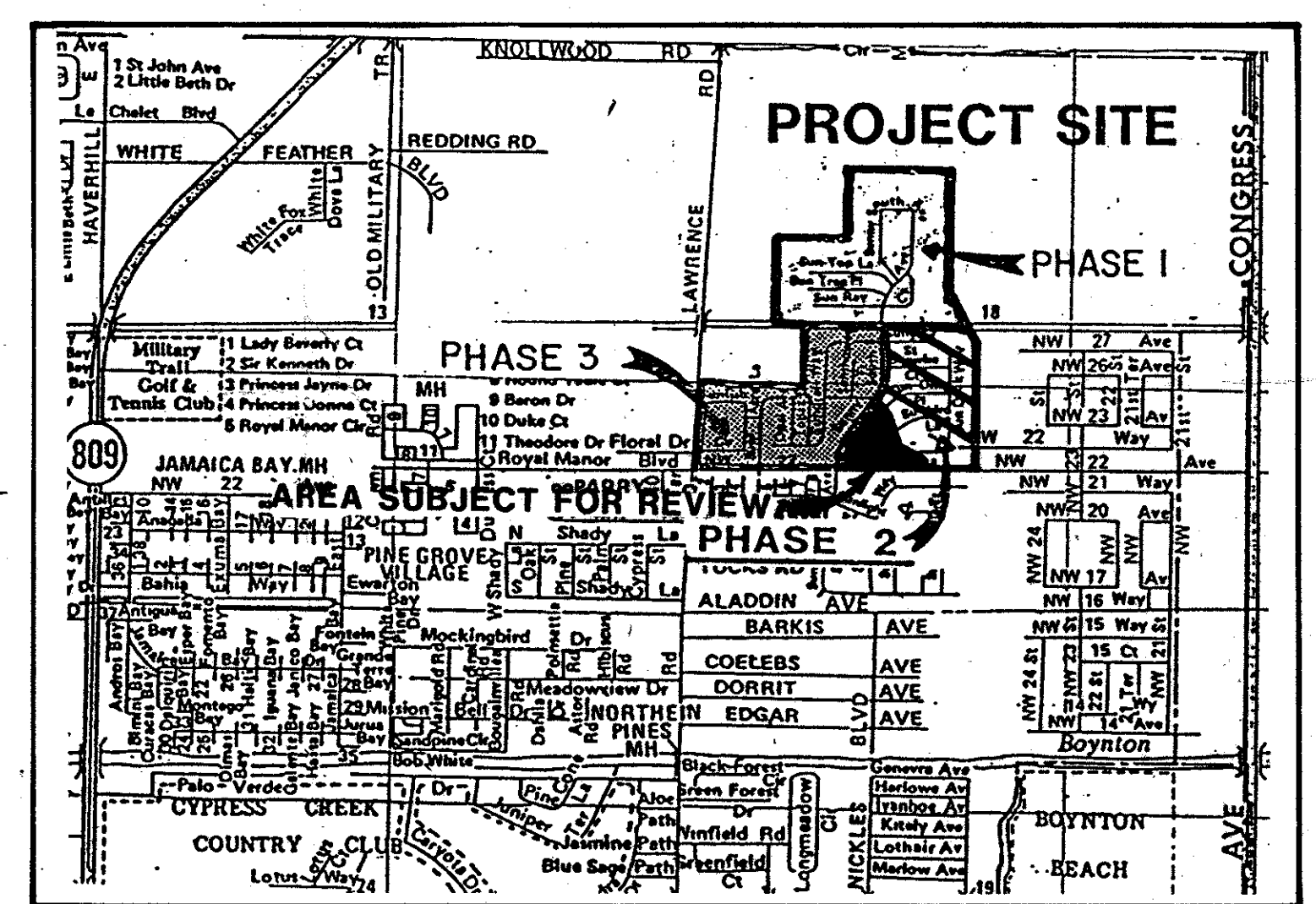


TABULAR INFORMATION

TOTAL LOT AREA - 4.21 Acres (183,387.60 Sq. Ft.)
GROSS BUILDING LOT AREA - 11,646 Sq. Ft.
BUILDING HEIGHT - 15 Ft.
FLOOR AREA RATIO - 0.064
LAND USE - RECREATION AREA
ZONING CATEGORY - MHRP (Mobile Home Rental Park)
TOWNSHIP, SECTION, RANGE - Sec. 18, Twn. 45, Rg. S 43 E
COUNTY PETITION NUMBERS - 79-290 & 79-293A

NOTE: Site Plan was amended from Project No. 7929 by Oliver and Glidden Architects, Inc. on January 8, 1982.

VICINITY MAP

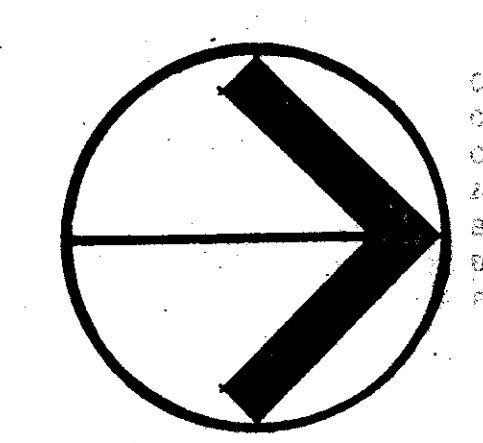


mh0040.igr
SUNNY SOUTH ESTATES REV CLUBHSE
PET 79-290, EXH 20, SUP 19

PETITION NO. 79-290
DATE SUBMITTED 2-8-88
EXHIBIT NO. 20
SUPERSEDES EXH. NO. 19

SUNNY SOUTH ESTATES SITE PLAN

SCALE 1" = 30'-0"



DATE APPROVED 2-24-88
COUNTY ENGINEER
COUNTY HEALTH DEPT
COUNTY ATTORNEY
ZONING DIVISION
BUILDING DIVISION
DEPT. OF FIRE RESCUE
PLANNING DIVISION



POST BUCKLEY, SCHUH & JERNIGAN
See Plan, 11